

# RECORDS SECTION

of the

# REAL ESTATE BUILDERS RECORD AND GUIDE.

This section includes all recorded Conveyances, Mortgages, Leases, in the Borough of Manhattan and Bronx and the recorded Wills in the Borough of Manhattan.

\*Entered at the Post Office at New York, N. Y., as second class matter.

Vol. XCIII

No. 2392

New York, January 17, 1914.

(29)

PRICE 20 CENTS

## STREET INDEX OF RECORDED CONVEYANCES AND WILLS

Showing street and number of Manhattan Conveyances and Wills recorded during the current week.

Broome st, 212-4 on map 212.	28th st, 330 E.	*80th st, 451 E (or Av A, 1514).	Nicholas av, 486.	Madison av, 1443-9.
Charles st, 53.	28th st, 8 & 13-15 W.	82d st, 516 E.	135th st, 306 W.	St Nicholas av, 486 & 938.
Christie st, 132.	28th st, 130 W.	83d st, 215-7 W.	137th st, 43-5 W.	St Nicholas av, 1466-8.
Clinton st, ws, (nwc Delancey, 156-60), blk 348-33.	*31st st, 130 E (or Lex av, 178).	84th st, 521 E.	140th st, 516-8 W.	St Nicholas av, 1470-4.
*Delancey st, 156-60 (nwc Clinton st), blk 348-33.	32d st, 153-5 E.	84th st, 135-7 & 344 W.	142d st, 291 W.	St Nicholas av, es, blk 2048-11 (or Edgecombe av, ws).
Delancey st, 186-8 & 204.	34th st, 467 W.	85th st, 127 & 228-30 E.	143d st, 134-44 W.	St Nicholas av, es, blk 2048-21 (or Edgecombe av, ws).
Duane st, 64-6 (on map 62-4).	*35th st, 401-5 W (or 9th av, 451).	86th st, 124-6 & 516 E.	*157th st W, sec 5 St Nicholas av, 928.	West End av, 210 & 314.
Essex st, 64.	*37th st, 103 W (or Bway, 1370).	91st st, 124 E.	171st st, 564 W.	1st av, 1605.
Front st, 354-6.	39th st, 146 & 322 E.	92d st, 124 & 130-2 E.	*174th st, 500 W (or Ams av, 2296-8).	2d av, 176, 318 & 1713.
*Goerck st, 123 (or Stanton, 320).	41st st, 123 W.	92d st, 311 E.	181st st, 720 W.	3d av, 867 & 1156-62.
Henry st, 189.	*42d st E, sec 5th av, Nos 495-501, blk 1276-69.	94th st, 64 E.	182d st, 620-2 W.	3d av, 1590.
*Horatio st, 85-9 (or Washington st, 799-801).	*44th st, 160-4 W (or Bway, 1508-12).	94th st, 27 & 274 W.	*184th st, 564-70 W (or St Nich av, 1470-4).	5th av, 495-501 & 2150.
Lewis st, 117 & 161-3.	45th st, 434 W.	94th st, 311 W.	*212th st W (sec Bway), blk 2229-5.	6th av, 232.
Macdougall st, 114.	46th st, 344-6 E.	*100th st, 48 E (or Madison av, 1449).	Av A, 25 & 293.	7th av, 1842-50.
Madison st, 274.	47th st, 327 E.	101st st, 215 E.	Av A, 1511.	8th av, 451.
*Norfolk st, 69-71 (or Broome st, 212-4).	48th st, 328 E.	101st st, 122 W.	Amsterdam av, 1336 & 2296-8.	10th av, 522-601-3.
Pitt st, 49.	49th st W, ss, 449.6 w 6 av.	102d st, 322 E.	Bradhurst av, 47.	<b>WILLS.</b>
Stanton st, 320 & 329.	50th st, 400 E (or sec 1st av, blk 1361-50).	103d st, 105 W.	Broadway, 683-5.	4th st, 327 W.
Washington st, 799-801.	54th st, 263 W.	103d st, 263 E.	Broadway, 1364-70.	7th st, 263 E.
Wooster st, 62.	55th st, 446 W.	103d st, 105 W.	Broadway, 1508-12.	16th st, 316-22 W.
*2d st, 145 E (or Av A, 25).	58th st, 532 W.	111th st, 3 W.	Broadway, es (sec 212th, blk 2229-5).	61st st, 31-3 W.
*3d st W (nwc Bway, 683-5), blk 535-57.	60th st, 403-5 E.	*112th st, 200 W (swc 7th av, 1844-50).	*Columbus av, 360-8 (or 77th st, 101 W).	62d st, 8 E.
11th st, 147 W.	69th st, 167 E.	117th st, 247 E.	Edgecombe av, 106.	62d st, 52 E.
12th st, 39-43 W.	69th st, 59 W.	117th st, 455 E.	*Edgecombe av, ws, blk 2048-11 (or St Nicholas av, es).	74th st, 19 E.
16th st, 618 E.	70th st, 242-56 W.	118th st, 280 W.	*Edgecombe av, ws, blk 2048-21 (or St Nicholas av, es).	74th st, 403 E.
18th st, 6-8 W.	71st st, 240 E.	120th st, 23 W.	Edgecombe av, w, s, on map 145-7, blk 2051-93.	84th st, 323 W.
19th st, 29 W.	76th st, 12 E.	122d st, 263 E.	Lexington av, 178.	114th st, 111 E.
25th st, 158-62 W.	77th st, 337 E.	125th st, 13-15 & 255 E.		117th st, 180 E.
	77th st, 100 W (or Col av, 360-8).	126th st, 6-10 W.		Amsterdam av, 28.
	79th st, 338 E.	*126th st, 500 W (or Ams av, 1336).		Amsterdam av, 2506.
	80th st, 218-20 E.	127th st, 72 E.		Lexington av, 686-8.
		128th st, 71-3 E.		Madison av, 1739.
		128th st, 35 W.		
		128th st, 45 & 49 W.		
		129th st, 121 W.		
		131st st, 111 W.		
		134th st, 74 W.		
		*134th st W, n e c St		

### EXPLANATIONS OF TERMS USED AND RULES FOLLOWED IN COMPILING RECORDS.

Q. C. is an abbreviation for Quit Claim deed, i. e., a deed wherein all the right, title and interest of the grantor is conveyed omitting all covenants and warranty.

C. a G. means a deed containing Covenant against Grantor only, in which he covenants that he hath not done any act whereby the estate conveyed may be impeached, charged or encumbered.

B. & S. is an abbreviation for Bargain and Sale deed, wherein, although the seller makes no expressed consideration, he really grants or conveys the property for a valuable consideration, and thus impliedly claims to be the owner of it.

The street and avenue numbers given in these lists are, in all cases, taken from the insurance maps when they are not mentioned in the deeds. The numbers, it will occasionally be found, do not correspond with the existing ones, owing to there having been no official designation made of them by the Department of Public Works.

The first date is the date the deed was drawn. The second date is the date of filing same. When both dates are the same, only one is given. When the date of drawing is other than in the current year the stated year is given. When both the dates are in the same year the year follows the second date.

The figures in each conveyance, thus, 2:482-10, denote that the property mentioned is in section 2, block 482, lot 10.

It should also be noted in section and block numbers that the instrument as filed is strictly followed.

A \$20,000-\$30,000 indicates the assessed value of the property, the first figures being for the lot only and the second figures representing both lot and building. Letter P before second figure indicates that the property is assessed as in course of construction. Valuations are from the assessment roll of 1913.

T. S. preceding the consideration in a

conveyance means that the deed or conveyance has been recorded under the Torrens System.

Flats and apartment houses are classified as tenements.

Residences as dwellings. All Christian names, streets, avenues, states and months are abbreviated when possible, also in some instances names of Banks, Trusts and Insurance Companies.

The number in ( ) preceding the serial number to the right of the date line, at head of this page is the Index number for the Checking Index.

The Star following names of street or avenue in the Bronx Conveyances, Leases and Mortgages indicates that the property recorded is in the annexed district, for which there is no section or block number.

### KEY TO ABBREVIATIONS USED.

(A)—attorney.  
A.L.—all liens.  
AT—all title.  
ano—another.  
av—avenue.  
admr—administrator.  
admtrx—administratrix.  
agmt—agreement.  
A—assessed value.  
abt—about.  
adj—adjoining.  
apt—apartment.  
assign—assignment.  
asn—assign.  
atty—attorney.  
bk—brick.  
B & S—Bargain and Sale.  
bldg—building.  
b—basement.  
blk—block.  
Co—County.  
C a G—covenant against grantor.  
Co—Company.  
constn—construction.  
con omittd—consideration omitted.  
corpn—corporation.  
cor—corner.  
c l—centre line.  
ct—court.  
certf—certificate.

dwg—dwelling.  
decd—deceased.  
e—East.  
exr—executor.  
extr—executrix.  
et al—used instead of several names.  
foreclos—foreclosure.  
fr—from.  
fr—frame.  
ft—front.  
individ—individual.  
irreg—irregular.  
impt—improvement.  
installs—installments.  
lt—lot.  
ls—lease.  
mtg—mortgage.  
mos—months.  
Mfg—manufacturing.  
Nos—numbers.  
n—north.  
nom—nominal.  
(o)—office.  
pr—prior.  
pt—part.  
pl—place.  
PM—Purchase Money Mortgage.  
QC—Quit Claim.  
R T & I—Right, Title & Interest.  
(R)—referee.  
r—room.  
rd—road.  
re mtg—release mortgage.  
ref—referee.  
sal—saloon.  
sobrn—subordination.  
sl—slip.  
sq—square.  
s—south.  
s—side.  
sty—story.  
sub—subject.  
strs—stores.  
stn—stone.  
st—street.  
TS—Torrens System.  
T & c—taxes, etc.  
tns—tenements.  
w—west.  
y—years.  
O C & 100—other consideration and \$100.













- Cedar st, 84-70**, see Bway, 108-24.
- Chambers st, 102**, see Church, 143-57.
- Church st, 143-57** (1:135), es, from Warren (No 32) to Chambers (No 102), 175.10 x24.8 on Warren x175.10x25 on Chambers; ext of mtg for \$190,000 to Jan1'16, 5%; Dec29'13; Jan10'14; Albany County Savgs Bank, of Albany, NY, with Church & Warren Co, a corp., nom
- Clinton st, 109** (2:348), nwc Delancey (Nos 156-64), 25x109; also WILLIAM ST, 197 (1:102), ws, 103.5 s Frankfort, runs w 55.4xn27.1xe29.9xn0.10xe24.8 to st xs28.5 to beg; also BLEECKER ST, 115-17 (2:534), ns, 50 e Wooster, 50x100; 1/2 R, T & I; pr mtg \$—; Jan15'14; 3y6%; Stonemor Realty Co, a corp, to Jos Alexander, 533 W 112. 30,000
- Clinton st, 109**; also WILLIAM ST, 197; also BLEECKER ST, 115-17; certf as to above mtg; Jan15'14; same to same.
- Columbia st, 65** (2:333); ext of mtg for \$14,000 to Mar1'19, 5%; Jan13; Jan15'14; Emma H Kaskel, 2 W 45, with Ignatz Schneider, 115 Av C. nom
- Delancey st, 156-64**, see Clinton, 109.
- Dyckman st, es, at nws 10 av**, see 10 av, nws, at es Dyckman.
- Grand st, 494-8** (2:336); ext of mtg for \$33,000 to Jan9'17, 5 1/2%; Jan9; Jan12'14; Susan R Kendall, 10 W 55, et al, trstes Isaac C Kendall, with Meyer London, 309 East Bway. nom
- Greenwich st, 68** (1:18), ws, 299.6 s Recor, 25.1x100.5x25.3x100; all title; Jan10; Jan15'14; due Sept20'14, 5%; Julia A Laufer, widow, to Saml Gans, 1037 Kelly, 1,000
- Greenwich st, 820** (2:642), swc Horatio (No 68), 22x72.11x22x72.4; Jan9; Jan10'14; 2y5%; Wm D Kilpatrick to American Mtg Co, a corp, 46 Cedar. 9,000
- Hester st, 204-6** (1:207), ss, 52.5 w Baxter, runs w40xs58.9xe20xs4.9xe20xn63.6; Jan12; Jan13'14; 2y6%; Anthony Santulli, 162 Hester, to Francesco Greco, 81 Oliver. 1,500
- Horatio st, 68**, see Greenwich, 830.
- Houston st, 130 E**, see 9 av, 87.
- Irving pl, 47** (3:872); ext of mtg for \$14,000 to Jan1'17; 5%; Jan7; Jan14'14; Lawyers Mtg Co with Ekko Sollmann, at Hoboken, NJ. nom
- Ludlow st, 121** (2:410), ws, abt 135 s Rivington, 19x87.6; pr mtg \$13,000; Jan12; Jan13'14; due May1'17, 6%; Chebra Kadischer Anshai Sochochow, a corp, to Rachel Fox, 114 1/2 Essex. 3,300
- Monroe st, 234** (1:261), ss, 150.5 e Scammel, 27.5x95.3; also MONROE ST, 236 (1:261), ss, 177.10 e Scammel, 27.4x95.4x27.4x95.3; also 118TH ST, 111 & 11A E (6:1745), ns, 210 e 5 av, 50x100.11; Aug1'13; Jan10'14; due &c as per bond; Louis, Abr, Jacob & Nathan Levy to Jacob Levy, 1800 7 av, & Nathan Levy, 1884 7 av. 10,597.95
- Monroe st, 236**, see Monroe, 234.
- Morton st, 57** (2:584); ext of mtg for \$26,000 to Oct1'16, 5%; Oct6'13; Jan13'14; Trustees of Columbia University, in City N Y, a corp, 63 Wall, with Emil Wagner, 193 2 av. nom
- Nassau st, 13-25**, see Bway, 108-24.
- New Chambers st, 73** (1:111); sal Ls; Jan 13; Jan14'14; demand; 6%; Thos Marino to Jacob Ruppert, a corp, 1639 3 av, 1,300
- Oliver st, 43** (1:278), ws, 103 s Madison, 25x100.6x25.3x100.6; Jan8; Jan15'14; 5y5%; Margt L White, individ & extr &c Jno P White, to Emigrant Indust Savgs Bank, a corp, 51 Chambers. 17,000
- Orchard st, 188** (2:412); ext of mtg for \$24,000 to June1'16; 5%; Apr3'13; Jan 14'14; Walter S Gurnee et al trstes for Evelyn S Chapman will Walter S Gurnee, decd, with Saml Katz, 86 Delancey. nom
- Pine st, 2-16**, see Bway, 108-24.
- Renwick st, 47**, see Spring, 308.
- Ridge st, 90** (2:343); ext of mtg for \$23,000 to Dec18'16; 5 1/2%; Dec9'13; Jan13'14; Lawyers Mtg Co with Louis L Richman. nom
- Spring st, 308** (2:594), swc Renwick (No 47), 25x75; pr mtg \$20,000; Dec20'13; Jan9'14; 2y6%; Avis S Birdsall, 104 E 9, Plainfield, NJ, & Edith F Embree & Mina E de Raimses, both at 87 Jamaica av, Flushing, B of Q, NY, to Chas T Tileston, 1625 Atfield av, Richmond Hill, B of Q, NY. 2,000
- Spring st, 308** (2:594), swc Renwick (No 47), 25x75; ext of mtg for \$20,000 to Dec 30'16, 5%; Dec31'13; Jan12'14; Alvis S Birdsall, Edith F Embree & Nina E de Raimses with Geo W Wickersham, 2 W 55, & ano, trstes Saml McLean. nom
- Warren st, 32**, see Church, 143-57.
- William st, 197**, see Clinton, 109.
- 2D st, 145 E**, see Av A, 25.
- 3D st, 222 E** (2:385), ss, 189.6 e Av B, 24.9x105.11; 1/2 pt; pr mtg \$—; Jan7; Jan 9'14; 5y6%; Hyman Wiener to Dora Kosnetz, 151 Rivington. 3,000
- 3D st, 346 E** (2:357), ss, 90 e Av D, 25x 105.10; ext of mtg for \$22,000 to May10 '19; 5%; Jan12; Jan13'14; Katie E Kroehle, 159 E 71 with Israel Bartha, 325 E 10. nom
- 3D st W, swc West Bway**, see West Bway, 552-60.
- 3D st, 64 W**, see West Bway, 552-60.
- 4TH st, 234-6 E** (2:399), ss, 103 w Av B, 48x96.2; ext of mtg for \$10,000 to Jan 5'19, 6%; Nov1'13; Jan12'14; Lena Deffaa, 393 West End av, with Rubin Levine, 1229 42d, Bklyn, & Levine Realty Co, a corp, 234-6 E 4th, NY. nom
- 4TH st, 320 E** (2:373), ext of mtg for \$10,000 to Jan6'17, 5 1/2%; Jan6; Jan9'14; Lawyers Title Ins & Trust Co a corp with Arnold N Mensch. nom
- 5TH st, 636 E** (2:387), ss, 188.11 w Av C, 24.9x96.2; pr mtg \$34,250; Oct7'11; Jan 15'14; 1y6%; Henry W Korman to Emanuel A Gardner, 514 W 114. 2,000
- 5TH st, 636 E**; pr mtg \$33,000; Nov28'10; Jan15'14; due Dec1'12, 6%; same to Saml Rosenberg, 56 Lenox av. 1,250
- 5TH st, 422 E** (2:432), ss, 275 w Av A, 25 x96.2; pr mtg \$16,000; Jan9'14; due, &c, as per bond; Edmund & Libbie E Bittiner, 251 W 92, to Harry Dannenberg, 600 W 157. 2,000
- 8TH st, 5 E** (2:566), ns, 100 e 5 av, 25x 93.11, leasehold; all title; Jan10; Jan12'14; 4y5 1/2%; Chas L Vath to Caroline L Vath, both at 130 W 10. 2,500
- 8TH st, 372-4 E**, see Allen, 128-30.
- 10TH st, 424 E** (2:379); ext of mtg for \$18,000 to Dec15'18, 5 1/2%; Jan8; Jan13'14; Lawyers Mtg Co with Isaac Cohen. nom
- 9TH st, 639 E**, see Allen, 128-30.
- 10TH st W, nwc Bleecker**, see Bleecker, 350-2.
- 13TH st, 519 E** (2:407), ns, 246 e Av A, runs n103.3xe25xs—xe02 1/2 xs68.11 to st xw 25 to beg, with all title to strip bet above & 521 E 13th, —; Jan2; Jan9'14; 3y6%; Michl Josephsohn to Wilhelmina K Gronholz, 213 S 9th, Bklyn. 4,000
- 15TH st, 230 W** (3:764); ext of mtg for \$10,000 to Nov9'16, 5%; Oct13; Jan15'14; Union Trust Co of N Y, gdn Phyllis McVickar et al, with Juliana Lyding. nom
- 16TH st, 400-6 W**, see 9 av, 87.
- 17TH st, 428 W** (3:714); ext of mtg for \$7,000 to Jan1'17, 5%; Dec26'13; Jan13'14; Bankers Trust Co, a corp, 16 Wall, with Louis Tekulsky, 20 E 120. nom
- 18TH st, 201-5 E**, see 3 av, 205-11.
- 18TH st, 6-8 W** (3:819), ss, 200 w 5 av, 52x92; PM; pr mtg \$260,000; Jan14; Jan 15'14; due &c as per bond; Hippan Realty Co, Inc, a corp, to Rosa Von Zimmerman, at Los Angeles, Cal. 5,000
- 19TH st, 216 E** (3:899); ext of mtg for \$12,000 to Jan8'17, 5 1/2%; Jan8; Jan13'14; Title Guar & Trust Co, a corp, with Concetta Delli Paoli, 216 E 19, individ & extr &c of Alessandro Delli Paoli. nom
- 22D st, 264 W** (3:771), ss, 100 e 8 av, 25 x98.9; ext of mtgs for \$22,000 & \$4,000 to Dec27'16, at 5%; Dec29'13; Jan9'14; Henry Wiener, of Phila, Pa, with Josephine M Buel, NY. nom
- 25TH st, 243 E** (3:906); ext of mtg for \$14,000 to Jan15'17; 5%; Jan6; Jan14'14; Thos Rothmann with Nannette E Kaufman, 30 E 83. nom
- 26TH st, 436 W** (3:723), ext of mtg for \$2,000 to July9'15; 6%; Jan9; Jan14'14; Leo Donovan with Mildon Realty Co, a corp, 99 Nassau. nom
- 30TH st, 220 E** (3:910), ss, 241.3 e 3 av, 18.9x98.9; pr mtg \$—; Jan12; Jan13'14; due &c as per bond; Jno R Rainey to Mutual Life Insurance Co of NY, a corp, 34 Nassau. 1,000
- 30TH st, 338 W** (3:753), ss, 334 e 9 av, 22x98.9; pr mtg \$—; Jan9; Jan10'14; due Jan1'16, 5%; Chas H A Dougherty to Edw Hils, 84 E 2. 1,000
- 34TH st, 436-40 W** (3:731); ext of mtg for \$50,000 to Dec1'16, 5%; Dec30'13; Jan 13'14; Lucie M Stearns with Harriet M Leach, at Montclair, N J. nom
- 35TH st, 39 E** (3:865), ns, 100 w Park av, 29x98.9; Jan12; Jan13'14; due &c as per bond; Francis H & May A Kinnicutt, both at Morristown, NJ, to Bankers Trust Co, a corp, 16 Wall, trste Geo T Perkins, decd. 50,000
- 36TH st W, sec 8 av**, see 8 av, 516.
- 37TH st, 107-21 W**, see Bway, 1372-80.
- 38TH st, 114 W**, see Bway, 1372-80.
- 38TH st, 347 W** (3:762), ns, 175 e 9 av, 25x98.9; Jan9'14; 3y5%; Max Heller to Franklin Savings Bank, 656 8 av. 15,000
- 39TH st, 146 E** (3:894), ss, 175 w 3 av, 25x84.10x25.3x88.6, 1/2 pt; PM; pr mtg \$25,000; Dec31'13; Jan9'14; 10y6%; Theo C Visscher to Wm B Nisbet at Great Barington, Mass. 12,000
- 39TH st, 52 W** (3:840); ext of two mtgs for \$30,000 & \$5,000 to May 1'24, 5% to May1'19 & thereafter, 4 1/2%; Jan9; Jan13 '14; Emma H Kaskel, 2 E 45, with Edwin W Glasscoe, 484 Van Cortlandt Park av, Yonkers, NY, & ano. nom
- 39TH st, 100-6 W**, see 6 av, 665-77.
- 40TH st, 351-5 W**, see Bway, 179.
- 41ST st, 123 W** (4:994), ns, 200 w 6 av, 20.4x98.9; PM; Jan8; Jan12'14; due &c as per bond; Woodbury G Langdon, of Morristown, NJ, to Chas A A Daring, 123 W 41. 65,000
- 42D st, 236 E** (5:1315), ss, 80 w 2 av, 25x98.9; Jan12'14; 1y or sooner, 5 1/2%; Emma L Stanly to Elsie K Powell, 130 E 70. 2,500
- 44TH st, 160-2 W**, see Bway, 1508-10.
- 44TH st, 164 W**, see Bway, 1508-10.
- 45TH st, 66 W** (5:1260), ss, 160 e 6 av, 20x100.5; Dec26'13; Jan12'14; 3y6%; Alex R Boyd, 206 S 13, Phila, Pa, to Flora Shuster, 1618 N 17, Phila, Pa. 5,000
- 45TH st, 434 W** (4:1054), ss, 450 w 9 av, 25x100.4; PM; Jan8; Jan9'14; due, &c, as per bond; Fredk H Kastens & Chas Brandt, both at 449 W 47, to Henry Meyer, 434 W 45. 6,000
- 46TH st, 533 W** (4:1075); sal Ls; Jan13; Jan14'14; demand; 6%; Thos F O'Reilly to Lion Bwy, a corp, 104 W 108. 1,000
- 46TH st, 543-53 W**, see 11 av, 628-44.
- 47TH st, 550-62 W**, see 11 av, 628-44.
- 52D st, 321 E** (5:1345), ns, 264.6 e 2 av, 20x100.5; pr mtg \$5,500; Jan10; Jan12'14; due &c as per bond; Adolph Kahn, at Grantwood, NJ, to Mary A Spangenberg, at Grantwood, NJ. 1,000
- 52D st, 259 W** (4:1024); ext of mtg for \$13,000 to Dec31'15, 5 1/2%; Dec24'13; Jan 13'14; Max Moses, sub-trste Fannie Moses, will Samson Wallach, with Jane C Long. nom
- 55TH st, 149 E** (5:1310), ns, 155 w 3 av, 49x100.5; 1/2 pt; pr mtg \$40,000; Aug14 '12; Jan12'14; 5y6%; Max Radt, 330 W 102, to Mollie Hirschfeld, 743 West End av. 12,720
- 60TH st, 14 W** (5:1374), ns, 200 e 5 av, 112x100.5; ext of mtg for \$600,000 to Mar 16'18, 4 1/2%; Nov5'13; Jan10'14; Alpha Realty Co, a corp, with Bowery Savgs Bank, a corp, 128 Bowery. nom
- 60TH st, 14 W**; consent of stockholders to above ext of mtg; Nov5'13; Jan10'14; same to same.
- 60TH st, 14 W**; certf as to above ext of mtg; Nov5'13; Jan10'14; same to same.
- 60TH st, 25 W**, see 61st, 16-24 W.
- 61ST st, 112 E** (5:1395); ext of mtg for \$35,000 to Nov1'17, 5 1/2%; Jan8; Jan15'14; Lawyers Mtg Co with Virginia K Magee. nom
- 61ST st, 16-24 W**; also 60TH ST, 25 W (4:1113); leasehold; secures performance of conditions in lease; pr mtg \$450,000; Feb19'13; Jan12'14; 21yf Oct1'13, 6%; Amos R E Pinchot, 1021 Park av, landlord, to Locomobile Co of America, a corp, of Bridgeport, Conn, as tenant. 30,000
- 63D st, 49 E** (5:1378); ext of mtg for \$30,000 to Dec20'16, 5%; Nov29'13; Jan13 '14; Lawyers Mtg Co with Kenneth M Murchison. nom
- 64TH st, 10 E** (5:1378); ext of mtg for \$30,000 to Feb17'17, 4 1/4%; Jan6; Jan10'14; Adelaide C, wife Wm P Hardenberg, of Bernardsville, NJ, with Frederika R Buckley, 607 W Front st, Plainfield, NJ. nom
- 65TH st, 218 E** (5:1419), ext of mtg for \$17,000 to Jan5'17, 5 1/2%; Dec22'13; Jan15' 14; Lawyers Mtg Co with Nellie Sturman. nom
- 68TH st, 526 E**; also 129TH ST E (misc) ns, bet 2 & 3 avs, Harlem River; garage; certf as to chattel mtg for \$— on above prop; Jan10; Jan12'14; Klosk Contracting Co, a corp, to Gerson M Krakower. —
- 71ST st, 113-5 W** (4:1143), ns, 100 w Col av, 49.11x102.2; Jan13'14; 5y5%; Hennessy Realty Co, a corp, 47 W 83, to Bklyn Savgs Bank, a corp, 141 Pierrepont, Bklyn. 145,000
- 71ST st, 113-5 W**; certf as to mtg for \$145,000; Jan13'14; same to same.
- 71ST st, 113-5 W**; pr mtg \$145,000; Jan 13'14; due July15'17, 6%; same to Abel King, 148 E 65. 20,000
- 71ST st, 113-5 W**; certf as to mtg for \$20,000; Jan13'14; same to same.
- 77TH st, 210 W** (4:1168); ext of mtg for \$7,500 to Dec24'16, 5%; Dec24'13; Jan10'14; Wm A & Kath M Williams, at Sea Cliff, LI, heirs of Wm Williams, with St Mary's Free Hospital for Children, a corp, 405 W 34. nom
- 79TH st, 210 E** (5:1433), ext of mtg for \$11,750 to Dec14'16, 5 1/2%; Dec8'13; Jan9 '14; Eliz A Galway with Rose Goldberger. nom
- 80TH st, 451 E**, see Av A, 1511.
- 85TH st, 556 E** (5:1581); ext of mtg for \$6,000 to Jan29'19, 5 1/2%; Dec1'13; Jan 13'14; Chas F Dean, trste Alice D Ward, will Thompson Dean, with Isidor Ulman. nom
- 86TH st, 169 E**, see 87th, 166 & 170-80 E.
- 87TH st, 48 E** (5:1498), ss, 83.5 e Mad av, 20x100.8; pr mtg \$17,000; Jan12; Jan 15'14; due &c as per bond; Louis A Ewald, 48 E 87, to Chas & Nickolas Ewald, both at 419 E 122. 3,000
- 87TH st, 166 & 170-80 E** (5:1515), ss, 190 e Lex av, runs s100.8xe230 to ws 3 av (No 1538), xn20.9xw75xn79.11 to st xw155 to beg; also 86TH ST, 169 E (5:1515), ns, 100 w 3 av, 28x100.8; pr mtg \$168,500; Jan 1; Jan12'14; 10y5 1/2%; The Glendive Amusement Corp, 260 W 42, to Empire Trust Co, a corp, 42 Bway. gold bonds 300,000
- 87TH st, 166 & 170-80 E**; also 3D AV, 1538; also 86TH ST, 169 E; certf as to above mtg; Jan3; Jan12'14; same to same.
- 92D st, 430 E** (5:1571), ext of mtg for \$12,000 to Jan15'17, 5%; Jan9; Jan15'14; Wm Kestenbaum with Nanette E Kaufman, 30 E 83. nom
- 94TH st, 29 W** (4:1208), ns, 259 w Central Park W, 16x100.8; PM; equal lien with following mtg for \$7,000; Jan14; Jan15'14; 3y5%; Pauline Frank, 18 E 95, to Caroline W Mitchell, 31 E 50. 5,000
- 94TH st, 29 W**; PM; equal lien with above mtg for \$5,000; Jan14; Jan15'14; 3y 5%; same to Abt W Seaman, 177 8 av, trste Jos N Ireland. 7,000
- 100TH st, 209 E** (6:1650), ext of mtg for \$15,000 to Nov1'18, 5 1/2%; Dec18'13; Jan 13'14; Lawyers Mtg Co with David Lite. nom
- 100TH st, 125 W** (7:1855), sal Ls; Jan 14'14; demand; 6%; Patk J O'Hara to Lion Bwy, a corp, 104 W 108. 1,000
- 101ST st, 120 E** (6:1628), ss, 159.7 e Park av, 17x100.11; pr mtg \$—; Dec31'13; Jan 14'14; due Jan1'16; 6%; Pessie R Mogilewsky, Annie Bernstein, David Mogilewsky, Minnie Levin & Fannie Tashman, of Bklyn, to Clara Terr, 120 E 101. 1,500
- 102D st, 322 E** (6:1673), ss, 275 w 1 av, 25x100.11; PM; Jan13'14; 3y5%; Michele Masucci to American Mtg Co, a corp, 46 Cedar. 9,000



**106TH st, 313 E** (6:1678), ns, 225 e 2 av, 25x100.11; ext of mtg for \$4,000 to July 8 '14, 6%; July 8'12; Jan15'14; Chas Fecheimer to Gulino Bernardoni. nom

**108TH st, 15 E** (6:1614), ns, 218 e 5 av, 26x100.9; pr mtg \$—; Dec20'13; Jan15'14; due & c as per bond; Eleanor A Freaney to Bella Goldsmith, 52 Lenox av. 4,225

**113TH st W, nec Riverside dr**, see Riverside dr, 410.

**113TH st, 300-2 W**, see 8 av, 2085.

**114TH st, 16 E** (6:1619), ss, 175 e 5 av, 25x100.11; Jan9; Jan12'14; 5v5%; Jno Wendt to Albt Ranken, 368 Greene av, Bklyn. 20,000

**115TH st, 422 E** (6:1708); ext of mtg for \$11,500 to Nov1'16, 6%; Nov24'13; Jan12'14; Antonio Gregorio, 409 E 115, with Henry Wollman, 1 W 70. nom

**117TH st, 247 E** (6:1667), ns, 92.6 w 2 av, 17.6x75.7; PM; Jan12; Jan13'14; 5y 5%; Robt Adelmant to Lawyers Mtg Co, 59 Liberty. 3,500

**117TH st, 455 E** (6:1711); ext of mtg for \$12,000 to Dec10'16, 5%; Dec9'13; Jan10'14; Theo F Volzing, NY, with Jno A Brown Jr, at Newtown Township, Delaware Co, Pa. nom

**118TH st, 11 & 11A E**, see Monroe, 234.

**118TH st, 24 W** (6:1601); ext of mtg for \$20,000 to Dec18'16, 5%; Dec26'13; Jan 12'14; Annie Hirsch, 100 W 121, with Augusta L Jones, at Easthampton, LI. nom

**119TH st, 280 W** (7:1924), ss, 80 e 8 av, 20x100.11; pr mtg \$—; Jan12'14; 3y6%; Nellie M O Sullivan to Mary V Langan, both at 95 Bay 26, Bklyn. 1,000

**121ST st, 232 E** (6:1785); ext of mtg for \$14,000 to July29'15, 5%; Oct17'13; Jan13 '14; Lawyers Mtg Co with Chas M Whitney Jr. nom

**121ST st, 141 W** (7:1906), ns, 462.6 w Lenox av, 20.10x100.11; ext of mtg for \$12,000 to Dec23'18, 5%; Jan5; Jan9'14; Henry Wiener of Phila, Pa, with Belle E Goldwater, NY. nom

**121ST st, 145 W** (7:1906), ns, 504.2 w Lenox av, 20.10x100.11; pr mtg \$—; Aug 22'13; Jan13'14; 2v6%; Eliz H Taylor, 145 W 121, to Ida M Knebel, 1018 Park pl, Bklyn. 1,500

**122D st, 500 W**, see Ams av, 1254-8.

**124TH st, 156 E** (6:1772), ss, 318.4 w 3 av, 21.4x100.11; pr mtg \$5,000; Jan7; Jan 12'14; 5y or sooner, 5%; Rachel Hoffman to Milton Kaufman, 300 W 109. 2,000

**125TH st, 13-15 E** (6:1750), ns, 100 e 5 av, 30x99.11; PM; pr mtg \$20,000; Jan12 '14; 3y or sooner, 5%; Vendome Realty Corp, Inc, 55 Liberty, to Rebecca A Spalding, 248 Lenox av. 20,000

**125TH st, 13-15 E**; certf that \$15,000 has been paid on a/c of mtg for \$35,000 & that \$20,000 now remains due; Jan7; Jan 12'14; Edw W Bedell, 132 Monte Vista av, Ridgewood, NJ, to same. —

**126TH st, 8 W** (6:1723), ss, 120 w 5 av, 20x80; PM; Jan13'14; 3y5%; Young Men's Christian Assn, a corp, 215 W 23, to Antoinette B Taylor, 8 W 126, et al. 7,000

**126TH st, 10 W** (6:1723), ss, 140 w 5 av, 20x80; PM; Jan13'14; 3y5%; Young Men's Christian Assn, a corp, 215 W 23, to Antoinette B Taylor, 8 W 126. 7,000

**127TH st, 364 W** (7:1953), ext of mtg for \$13,000 to Jan13'17, 5%; Jan13; Jan 14'14; Anna E Donald, 39 W 46 with Marat Hagan, 67 E 127. nom

**128TH st, 40 W** (6:1725), ss, 397.6 e Lenox av, 37.6x99.11; Jan15'14; 5v5%; Louise Borges of Flushing, E of Q, to Emigrant Indust Savgs Bank, a corp, 51 Chambers. 30,000

**128TH st, 154-60 W** (7:1912), ss, 166.8 e 7 av, 66.8x99.11; pr mte \$28,000; May16'11; Jan14'14; 3v6%; Hester Bates to Chas T Pegg, 52 W 89. 2,400

**130TH st, 224 W** (7:1935), ss, 282.6 w 7 av, 17.6x99.11; ext of mtg for \$8,500 to Jan17, 4%; Jan9; Jan15'14; Archer V Pancoast, 316 W 72, trste Minnie A Pancoast, with Henrietta M Monross, 224 W 130. nom

**130TH st W**, see 8 av, see 8 av, see 130

**134TH st, 74 W** (6:1731), ss, 160 e Lenox av, 25x99.11; PM; Jan12'14; 5v5%; Julius Elkan to N Y Trust Co, 26 Broad. 10,300

**134TH st, 74 W**; PM; pr mte \$10,300; Jan12'14; due & c as per bond; Julius Elkan to Florence Prehs 21 E 82. 5,150

**135TH st, 168 W** (7:1919), ss, 325 e 7 av, 25x99.11; ext of mtg for \$20,000 to Mar23'16; 5%; Aug2'13; Jan13'14; Wm J Farrell with Jas Stokes. nom

**140TH st, 516-18 W** (7:2071), ss, 225 w Ams av, 2 lots ea 15x99.11; 2 PM mtes ea \$7,000; Jan14'14; 5v5%; Eugenie R Elison to Lawyers Title Ins & Trust Co, 14,000

**142D st, 520 W** (7:2073), ss, 360 e Rway, 15x99.11; Jan10; Jan12'14; 5y5%; N Y Ostrating Co, a corp, to Dora M Rieck, 2911 Bway. 8,000

**142D st, 520 W**; certf as to above mtg; Jan9; Jan12'14; same to same. —

**143D st, 255 W** (7:2029), ns, 212.6 e 8 av, 37.6x99.11; pr mte \$28,000; Jan8; Jan 14'14; 2v or sooner, 6%; Country Homes Realty Co, a corp, to Fredk S & Jacob C Heinsheimer, 104 W 70. 3,000

**148TH st, 542 W** (7:2079), ss, 308.4 e Rway, 16.7x99.11; Jan15'14; 3v5%; Agnes Daly to Emigrant Indust Savgs Bank a corp. 8,500

**171ST st, 564 W** (8:2127), ss, 125 e St Nicholas av, 25x95; Jan8; Jan9'14; 5y5%; Alice Cromarty to Lawyers Title Ins & Trust Co. 6,500

**174TH st, 500 W**, see Ams av, 2296-8.

**177TH st, 501 W**, see Ams av, 2360.

**180TH st, 600-2 W**, see St Nicholas av, 1395.

**182D st, 620-2 W** (8:2165), ss, 50 e Wadsworth av, 50x70; pr mtg \$35,000; Jan15'14; 5y5%; Alice Cromarty to Eliz Cromarty, at Catskill, NY. 2,000

**184TH st, 564-70 W**, see St Nicholas av, 1466-74.

**212TH st W**, see Bway, see Bway, see 212th.

**Av A, 25** (2:429), swc 2d (No 145), 15.3x 64; Jan15'14; 3y5%; Eliz K Voegelin, of Pine Bush, NY, to German Savgs Bank, 157 4 av. 12,000

**Av A, 1511** (5:1560), nwc 80th (No 451), 26x81.6; certf by party 1st pt that he holds original mtg for \$34,000, due June 1'15, on which int has been increased from 4 1/2% to 5%; Jan8; Jan10'14; Howard Conkling to Nathan Marcus. —

**Amsterdam av, 344** (4:1168), ws, 51.1 n 76th, 25.6x90; Dec30'13; Jan9'14; due Jan 9'17, 5%; Leonora, wife Fredk J Lisman, to American Mtg Co, a corp. 18,000

**Amsterdam av, 1254-8** (7:1976), swc 122d (No 500), 90.11x100; ext of mtg for \$150,000 to Mar11'17; 5%; Jan13; Jan14'14; Peter Korn, 238 E 68 with Metropolitan Life Ins Co, a corp, 1 Mad av. nom

**Amsterdam av, 2296-8** (8:2130), swc 174th (No 500), 50x100; ext of mtg for \$63,000 to Apr24'17 at 5%; Jan2; Jan9'14; Utility Realty Co, a corp, with Saml Rosenthal. nom

**Amsterdam av, 2360** (8:2132), nwc 177th (No 501), 84.4x100, leasehold; all title; Jan 10; Jan12'14; 1y6%; Brettholz-Krumholz Constn Co, a corp, 302 Bway, to Florence B Friedlander, 425 1st, Bklyn. 5,000

**Broadway, 179** (1:63), ws, 71.2 n Cortlandt runs w61.6 & 20.3x—18.4x81.0 & 15.5 x99.6 to Bway xn25.4 to beg; also 40TH ST, 351-5 W (4:1031), ns, 120 e 9 av, 60x 98.9; pr mtg \$—; Jan13'14; 2v6%; Winfield S Gilmore to Emil C Bondy, of Summit, NJ. 25,000

**Broadway, 108-24** (1:47), es; also NAS-SAU ST, 13-25, ws; also CEDAR ST, 84-70, ss; also PINE ST, 2-16, ns, the block; pr mtg \$20,500,000; May1'13; Jan14'14; 30y; 6%; Equitable Office Building Corp, to Title Guar & Trust Co, a corp, 176 Bway as trste. gold bonds 5,000,000

**Broadway, 108-24**, same prop; certf as to above mtg; Jan8; Jan14'14; same to same. —

**Broadway, 1372-80** (3:813), nec 37th (Nos 107-21) 104x187.6x98.9x154.10; also BROADWAY, 1382, es, 78 s 38th, 26x96x24.8x104.2; also 38TH ST, 114 W (3:813), ss, 180 w 6 av, 20x74.1x98.8x24.8x12x98.9 to beg; pr mtg \$50,000; Nov29'13; Jan15'14; due May 19'18, 5%; Hobart Estate Co, a corp, to Moses T Pyne, at Princeton, NJ, et al, trstes Moses Taylor, decd, for Kate W Winthrop & ano. 50,000

**Broadway, 1372-80**; also BROADWAY, 3282; also 38TH ST, 114 W; consent of stockholders to mtgs; Nov14'13; Jan15'14; same to same. —

**Broadway, 1372-80**, nec 37th; also BROADWAY, 1382; also 38TH ST, 114 W; certf as to above consent to mtgs; Nov29 '13; Jan15'14; same to same. —

**Broadway, 1382**, see Bway, 1372-80.

**Broadway, 1508-10** (4:966), es, 26.2 s 44th, runs s76.1x97.8 to cl Low's la xnw 2.1x1e18.3xn100.5 to ss 44th (Nos 160-9), xw 61.4x825.10xw65.6 to beg, fee; also BROADWAY, 1512 (4:966), sec 44th (No 164), 26.2 x65.6x25.10x69.11, leasehold; pr mte \$1,600,000; Jan8; Jan10'14; due Jan1'24, 5%; Claridge Co, Inc, a corp, to Title Guar & Trust Co, a corp. gold bonds 750,000

**Broadway, 1508-10**; also 44TH ST, 160-2 W, fee; also BROADWAY, 1512; leasehold; certf as to above mtg; Jan8; Jan10'14; same to same. —

**Broadway, 1512**, see Bway, 1508-10.

**Broadway, 2191-9** (4:1169), leasehold; agmt to reinstate mtg for \$21,500, &c; Jan13; Jan15'14; 78th St & Bway Co, a corp, 2734 Bway, with Union Estates Co, a corp, 135 Bway. nom

**Broadway, 2191-9**; leasehold; certf as to above agmt; Jan13; Jan15'14; same to same. —

**Broadway** (8:2229), see 212th, 118.7x175x 99.11x111.1; PM; Jan14; Jan15'14; 3y5%; Raymond Du Puy to Alliance Realty Co, a corp, 115 Bway. 30,000

**Lexington av, 447** (5:1299), es, 85.5 s 45th, 15x75; Dec26'13; Jan9'14; due Apr1 '14, 4%; Caroline A Barry, 28 Rockaway av, Nassau Co, NY, to Edw Holland, 876 W 180. 525

**Lexington av, 577** (5:1306), es, 18.1 n 51st, 18.10x67; Jan9'14; 5v5%; Mary Schieffer, widow to Bowery Savgs Bank, a corp, 128 Bowery. 17,000

**Lexington av, 1839** (6:1641), es, 215 s 114th, 19.9x78; Jan13; Jan14'14; 5v5%; Geo S, Chas E & Wm H Ruland gdns Martie E & Wm H Ruland to Lawyers Title Ins & Trust Co. 3,300

**Madison av, 519** (5:1289), es, 60.5 n 53d, 20x85; pr mtg \$25,000; Jan14'14; due & c as per bond; Kath C Herzog to Edw H Herzog, 519 Mad av. 10,000

**Manhattan av, 511** (7:1948); ext of mtg for \$10,000 to Dec15'18, 5%; Dec23'13; Jan13'14; Libbie E Cone with Cecelia Herrman. nom

**Negle av** (8:2172), cl, 320 sw of cl Elmwood, runs nw312.7xsw130.5xse228.10 to cl of av xne100 to beg; pr mte \$8,500; Dec24 '13; Jan9'14; due, &c, as per bond; Jas A Lynch to Victoria Duffy, 92 Morningside av. 4,000

**Riverdale dr, 410** (7:1895), nec 113th, runs e85.3xn50.11xe0.4xn50xw111.9 to dr xs104.3 to beg; ext of mtg for \$75,000 to Jan14'17, 6%; pr mtg \$450,000; Jan13; Jan

14'14; Wm E Benjamin, of Ardsley-on-Hudson, NY, with Riverside Mansions, a corp, 1123 Bway. nom

**St Nicholas av, 1395** (8:2162), swc 180th (Nos 600-2), 50x100; pr mtg \$70,000; Jan 14'14; due & c as per bond; Stephen J Egan to Wm Meyn, 706 W 180. 16,000

**St Nicholas av, 1466-74** (8:2154), see 184th (Nos 564-70), 99.11x100; PM; pr mtg \$61,000; Jan9; Jan10'14; 2y6%; Port Jervis Land Impt Co, Inc, a corp, 35 Nassau, to Louisa Eckhardt, 563 W 184. 12,500

**St Nicholas av, 1466-74**; certf as to above mtg; Jan9; Jan10'14; same to same. —

**St Nicholas av, 1468** (8:2154); ext of mtg for \$15,000 to Dec4'16, 5%; Jan9; Jan10'14; Chas Muhlenfels, 616 W 147, with Louisa Eckhardt, 563 W 184. nom

**Wadsworth av, 143** (8:2162), ext of mtg for \$30,000 to Dec1'16; 5%; Jan9; Jan14 '14; Belford Realty Co, Inc, a corp, 131 E 86 with Walter F Kingsland, 22 Av du Bois de Boulogne, Paris, France. nom

**West Broadway, 552-60** (2:537), swc 3d, 100x25; sobrn of mtgs for \$26,000 to asn of rents for \$6,249.83 money advanced to Clarence E Sutherland; Jan8; Jan9'14; Stephen & Albina Cavinato with American Surety Co of N Y, 100 Bway. nom

**West Broadway, 552-60** (2:537), swc 3d (No 64), 100x25; sobrn of lien & claim, &c, under power of atty to asn of rents for \$6,249.83; Jan10; Jan15'14; Clarence E Sutherland with American Surety Co of NY, 100 Bway. nom

**1ST av, 1605** (5:1546), ws, 51.6 n 83d, 25.6 x70; PM; pr mtg \$15,000; Jan15'14; 5y or sooner, 6%; Valentine Brech, 1605 1 av, to Jno Baco, 822 E 163. 6,000

**2D av, 176** (2:453); agmt to delivery of deed by party 1st pt as collateral to secure loan of \$2,000 made by party 2d pt; Jan5; Jan14'14; —; Rose M Kaufman owner with Tessie Appelbaum, 204 Eldridge. 2,000

**2D av, 318** (3:924), es, 86.8 s 19th, 21.8x 100; PM; Jan12'14; due & c as per bond; Alex J Leimburg, of Bklyn, to Title Guar & Trust Co, a corp. 12,000

**2D av, 3513** (5:1433), ws, 51.1 s 79th, 25.6 x105; ext of mtg for \$10,000 to Jan7'15, 5%; Jan7; Jan9'13; Emigrant Indus Savings Bank, a corp, 51 Chambers, with Wilhelmina F & Wilhelmina L Muller, both at 28 W 68. nom

**2D av, 1563** (5:1527); ext of mtg for \$8,000 to Feb1'17, 5%; Jan8; Jan9'14; Saluscha Michaelis, 165 W 136, with Amalie Weisz, 30 E 128. nom

**2D av, 2404-8** (6:1800), es, 40 n 123d, 60x 100; pr mtg \$—; Jan10; Jan12'14; installs \$100 monthly after May1'14, 6%; Isaac Silverman & Benj Marks to Pauline Bloch, 591 Beech ter. 2,500

**3D av, 205-11** (3:899), nec 18th (Nos 201-5), runs e100xn92xw40x818xw60 to av xs 74 to beg, leasehold; Dec10'13; Jan14'14; demand; 6%; Otto P Amend, 33 W 81 to Ferdinand R Minrath, 119 W 75. 4,500

**3D av, 205-11**; leasehold; Nov17'13; Jan 14'14; demand; 6%; same to same, 32,515

**3D av, 279** (3:902), ss, 22 sw 22d, 22x75; Jan12'14; due & c as per bond; Patk Kierman to Greenwich Savgs Bank, 246-8 6 av. 10,000

**3D av, 1538**, see 87th, 166 & 170-80 E.

**3D av, 1870** (6:1631); ext of mtg for \$2,750 to Jan1'16, 6%; pr mtg \$15,000; Jan8; Jan9'14; The Hermitage Co, a corp, with Harry & Anna Kessner, 844 Dawson. nom

**3D av, 2177** (6:1783), es, 50.5 s 119th, 25x100; pr mte \$25,000; Jan12; Jan13'14; due & c as per bond; Chas M Torpey to Jacob Frankenthaler, 201 W 120. 3,000

**5TH av, 1335** (6:1617); ext of mtg for \$35,000 to Nov26'16, 5%; Jan7; Jan12'14; Henrietta Kahn, 310 Convent av, with Walter F Kingsland, 22 Av du Bois de Boulogne, Paris, France. nom

**6TH av, 665-77** (3:814), swc 39th (Nos 100-6), 98.9x100, leasehold; Jan7; Jan9'14; due & c as per notes 6%; Jas E McDonald, 318 W 108; Cath McDonald, 2609 Voorhies av, Bklyn, exrs Frank B McDonald (dec'd), & Wm McDonald, 557 W 141, to Jno McKeefrey, 123 Clermont av, Bklyn. notes 30,448.10

**7TH av, 2300** (7:1941); asn Ls as collateral to secure \$6,000; Sept23'12; Jan13 '14; Brownell Matheny & Chas Kronmann to Wm Wellbrock, 435 Riverside dr. nom

**8TH av, 516** (3:785), sec 36th; sal Ls; pr mte \$3,500; Jan14; Jan15'14; installs, \$50 & \$100 monthly for 46 months, 5%; Geo W & Benj T Cullen to Martin J Martell, 557 W 141, & ano. notes 4,000

**8TH av, 856** (4:1023), es, 75.5 n 51st, 25x 80; pr mte \$30,000; Jan6; Jan9'14; due, &c, as per bond; Jas Maloney to Jno J Maloney, 850 8 av. 7,000

**8TH av, 2085** (7:1847), swc 113th (Nos 300-2), 25.5x100; ext of mtg for \$37,000 to Dec21'18, 4 1/2%; Dec19'13; Jan9'14; Henry Wiener, Phila, Pa, with Mary T Casey, NY. nom

**8TH av** (7:1935), see 130th; sal Ls; Jan9; Jan14'14; demand; 6%; Henry Doscher at Nanuet, NY to Lion Bwy, a corp, 104 W 108. 1,500

**9TH av, 87** (3:713), swc 16th (Nos 400-6), 25x100; pr mte \$46,500; also HOUSTON ST, 130 E (2:442), ns, abt 100 e 2 av, 25x82; pr mte \$33,500; Aug7'13; Jan12'14; 5v5%; Jacob A Ranth to Louis Tynberg, at St Gaul, Switzerland. 5,000

**10TH av** (8:2150), nws, at es Dyckman; sal Ls; Jan6; Jan9'14; demand, 6%; Thos Hill to A Hupfel's Sons, a corp, 842 St Ann's av. 1,779.53

**11TH av, 628-44** (4:1075), es, exts from 46th (Nos 543-53) to 47th (Nos 550-62), 200.10x200; Jan12; Jan13'14; due Jan

'19, 5½%; A Leopold & Jos S Auerbach to Lawyers Title Ins & Trust Co 160 Bway. 650,000

### MISCELLANEOUS MORTGAGES.

#### Borough of Manhattan.

Agmt of conditional sale (misc), Car & R R equipment Ls; general mtg. &c; Nov'13; Jan'14; 10y4½%; Blair & Co, NY, vendors, & Grand Trunk Railway Co of Canada, with Equitable Trust Co of NY, a corp, trste. gold notes 2,250,000  
 Rockaway Park, B of Q (misc); certf of declaration as to consent to mtgs; Jan'14; Jan'15'14; Matinecock Realty Co, a corp, to whom it may concern.

### MORTGAGES.

#### Borough of the Bronx.

Dawson st (10:2686) ss, 115 w Leggett av, 25x100; pr mtg \$4,000; Jan'1; Jan'10'14; 5y5%; Herman Wieben to Sophie Hastedt, 908 Leggett av. 2,000  
 Barretto st (10:2738), ws, 155.1 n Spofford av, runs w306.83x210.1x395.6 to st xs196.11 to beg; certf & consent to stockholders to mtg for \$18,000; Dec'17'13; Jan'15'14; Pelhamdale Land Co to Whom It May Concern.  
 Dawson st, 774 (10:2701); ext of \$7,000 mtg to Dec'16 at 5½%; Dec'12'13; Jan'13'14; Florence I Smith & ano, trstes Jno D Mennie, with Fredk F Shaut. nom  
 Fordham pl, sec University av, see University av, sec Fordham pl.  
 Fox st (10:2724), es, 140.6 n 163d, 40x110.1x40x111.4; bldg loan; Jan'14; Jan'15'14; demand, 6%; Podgur Realty Co to N Y Trust Co, 26 Broad. 32,000  
 Fox st (10:2724), same prop; certf as to above mtg; Jan'14; Jan'15'14; same to same.  
 Fox st (10:2724); same prop; sobrn agmt; Jan'15'14; American Real Estate Co with same. nom  
 Freeman st, sec Vyse av, see Vyse av, sec Freeman.  
 Home st, sec Prospect av, see Prospect av, sec Home.  
 Matilda st (\*), ws, 200 n Becker av or 241st, 50x100; Jan'8; Jan'10'14; 3y6%; Louis Schoen & Jacob Schlesinger to Mary Freiberg, 47 Rich av, Mt Vernon, NY. 2,400  
 Minford pl, 1520-8 (11:2977), nec 172d (No 901), 75x100; pr mtg \$70,000; Jan'7; Jan'9'14; installs, 6%; Pauline Stahl to Gabrielle J Enell, 280 5 av. 5,000  
 Oak Tree pl (11:3070), sec Arthur av, 90x25; ext of \$20,000 mtg to Jan'17 at 5%; Jan'13; Jan'14'14; Louis Cumamon with Rogers Gallagher Constn Co, Inc, a corp, nom  
 Trafalgar pl (11:2958), es, 75 s 176th, 50 x78; PM; Jan'10; Jan'12'14; due &c as per bond; Duo Co, 391 E 149, to North Side Mtg Corp, 391 E 149. 3,200  
 Vineyard pl, es, abt 70 n 175th, see Mohegan av, 1817.  
 144TH st, 541 E (9:2271), ns, 97 w St Anns av, 27.10x100; Jan'10; Jan'12'14; 3y5%; Marie Lischke, widow, to Jno Packert, 541 E 144. 1,200  
 146TH st, 735 E (9:2291), ns, 100 w Brook av, 25x100; ext of \$4,000 mtg to Jan'19 at 5%; Jan'8; Jan'9'14; August Schulz with Mary Henne.  
 151ST st, 254-6 E (9:2440) ss, 100 w Morris av, 50x118.5; PM; pr mtg \$33,000; Jan'8; Jan'9'14; due &c as per bond; Louisa Zunino to Michele Lagomarsino, 123 Worth. 12,000  
 157TH st, 521-5 E (9:2360); ext of \$30,000 mtg to Dec'16 at 5½%; Dec'8'13; Jan'13'14; Cohoes Savgs Instn with Kroehle Realty Co. nom  
 165TH st E (10:2659), ss, 60 w Tinton av, 29.10x90; Jan'14'14; 5y5%; Louis Lahrmann to German Savgs Bank, 157 4 av. 12,000  
 167TH st E, sec Clay av, see Clay av, sec 167.  
 167TH st E, sec Morris av, see Morris av, sec 167th.  
 172D st, 901 E. see Minford pl, 1520-8.  
 172D st E, nec Hoe av, see Hoe av, nec 172.  
 173D st, 308 E (11:2791), ss, 45 e Mt Hope av, 50x95; pr mtr \$6,500; Jan'12; Jan'14'14; 1y6%; Dora Ebenstein, 442 E 172 to Edwin M Hydeman, 350 W 88. 500  
 174TH st, 508 E (11:2921); ext of \$6,000 mtg to Dec'28'16 at 5½%; Jan'5; Jan'13'14; Lawyers Mtg Co with Annie A Cobb. nom  
 175TH st, 713 E (11:2949); ext of \$15,000 mtg to Oct'24'16 at 5%; Dec'17'13; Jan'9'14; J Frederic Kernochan & ano, comm, with Alice S Anderson. nom  
 178TH st, 777 E (11:3106), ns, 100 w Mapes av, 45.3x81.4x45.3x81.5; PM; Jan'12'14; due &c as per bond; Sons of Israel of The Bronx to Caroline Acker, 971 Ams av, et al. 4,500  
 183D st E, nec Davidson av, see Davidson av, nec 183d.  
 187TH st E, sec Arthur av, see Arthur av, sec 187th.  
 192D st W, nec University av, see University av, nec 192d.  
 214TH st E (Av A) (\*), ns, 100 w Maple, 25x125; Jan'8; Jan'9'14; due &c as per bond; Bridget A Rose, 719 E 214, to Julia A Owsian, 739 E 228. 1,000  
 233D st E, nec White Plains av, see White Plains av, nec 233d.

236TH st E (12:3385), ns, 700 e Katonah av, 100x149.3x100x149.1; Jan'14; Jan'15'14; due &c as per bond; Alex Tofts to Caroline Ridgley, New Rochelle, NY. 5,000  
 Anthony av (11:3156), ws, 50.10 n 180th, 25.5x79.10x25x83.1; Jan'14'14; 3y6%; Agnes Viggers, 3044 Woodlawn rd to NY Edison Savgs & Loan Assn, a corp, 55 Duane 2,400  
 Anthony av (11:3156), same prop; Jan'14'14; installs, 6%; same to same. 2,600  
 Arthur av, 2106 (11:3070), es, abt 45 n 180th, 25x93; PM; pr mtg \$3,500; Jan'9; Jan'10'14; installs, 6%; Chas J Geisendorfer to Peter Doelger, 2106 Arthur av. 3,300  
 Arthur av (11:3065), swc 187th, 39.7x51.10x40.8x50.9; certf as to mtg for \$16,500; Nov'26'13; Jan'12'14; Russo-Iodice Realty Co, Inc, to Jas G Wentz. —  
 Arthur av, sec Oak Tree pl, see Oak Tree pl, sec Arthur av.  
 Arrow av (\*), ss, 402 e Pelham rd, 50x75; Dec'30'13; Jan'14'14; demand, —%; Fredk Wagner to Westchester County Brewing Co, 21 Prospect av, Mt Vernon, NY. 200  
 Beach av (\*), ws, 300 n Randall av, 25x100; bldg loan; Jan'13; Jan'14'14; 3y5½%; Academy Bldg Co Inc, 2069 Westchester av to Henry Reiss, 811 E 155. 3,000  
 Beach av (\*), same prop; certf as to above mtg; Jan'13; Jan'14'14; same to same.  
 Beach av (\*), ws, 200 n Randall av, 25x100; bldg loan; Jan'13; Jan'14'14; 3y5½%; Academy Bldg Co, Inc, 2069 Westchester av to Henry H Grote, 2552 8 av. 2,750  
 Beach av (\*), same prop; certf as to above mtg; Jan'13; Jan'14'14; same to same.  
 Beach av (\*), ws, 250 n Randall av, 25x100; bldg loan; Jan'13; Jan'14'14; 3y5½%; Academy Bldg Co, Inc, 2069 Westchester av to Magdalena Erzer, 1180 Jackson av & ano. 3,000  
 Beach av (\*), same prop; certf as to above mtg; Jan'13; Jan'14'14; same to same.  
 Belmont av 2171 (11:3082), ws, 127.2 s 182d, 25.1x82.6x25.1x83.1; PM; pr mtg \$2,000; Jan'7; Jan'9'14; 3y5%; Tekla Diaczek, 2169 Belmont av to Jos Mitchell, 2171 Belmont av. 2,500  
 Belmont av, 2497 (11:3078), ws, 253.8 s Fordham rd, 18.7x87.6; Jan'14'14; 3y5½%; Lars J Peterson to Jno Bussing, Mt Vernon, NY. 2,250  
 Broadway (13:3421), ws, 47 s Mosholu av, 25x100; pr mtg \$2,000; Jan'12; Jan'13'14; due &c as per bond; Fredk Zibelin, 170 E 78, to Auguste Langer, 445 W 36. 1,800  
 Brook av, 1504 (11:2895); ext of \$15,500 mtg to Jan'17 at 5¼%; Jan'2; Jan'13'14; Jno E & David J Kaliski with Eliz Koerner, 111 W 7. nom  
 Bryant av, (10:2764), es, 150 n Lafayette av, 25x100; pr mtg \$800; Dec'26'13; Jan'13'14; due &c as per bond; Albt Gerhards to Clara S Dean, 11 Lawrence, Yonkers, NY. 150  
 Bryant av, 1872 (11:3004), sal Ls; Jan'9; Jan'14'14; demand, 6%; Johanna Reuter to A Hupfells Sons, a corp, 842 St Anns av. 3,383.80  
 Clay av (9:2429), swc 167th, 161.11x97.4x108x110; PM; pr mtr \$—; Jan'9'14; 2v 6%; A J Schwarzler Co to Hensol-Powell Realty Co, 516 Chambers. 6,400  
 Concord av (\*), ws, 96 n 236th, 200x83.6; Jan'7; Jan'13'14; 3y6%; Nickolas Vogel to Oscar Matthiessen, 332 E 150. 4,500  
 Crotona av (11:3119), es, 39.9 s 182d, 39.11x69.3x35x89; ext of \$20,000 mtg to Jan'9'19 at 5½%; Dec'12'13; Jan'13'14; Lawyers Mtg Co with F & B Constn Co, 749 A Mad av. nom  
 Davidson av (11:3197), nwc 183d, 100x25; pr mtr \$—; Jan'14; Jan'15'14; 1y6%; Bernard & Margt A Lynch to Henry Cachard, trste Edw Stern, 39 Blvd Haussmann, Paris, France. 1,000  
 Fordham rd (11:3235), ss, 49 e Harlem River ter, 50x60; PM; Jan'8; Jan'13'14; due &c as per bond; Jos Gruber, 407 W 205, to Amelia Moser, 175 E 89. 6,000  
 Fowler av, sec Morris Park av, see Morris Park av, sec Fowler av.  
 Gun Hill rd, sec White Plains rd, see White Plains rd, sec Gun Hill rd.  
 Gun Hill rd (\*), ns, 616.5 e Tilden, runs e300.7xne20.6 to cl 211th xw334.8 to cl Barnes av xs260 to beg; ext of \$5,000 mtg to Jan'3'17 at 6%; Jan'5; Jan'13'14; Park Mfg Co with American Real Estate Co, 527 5 av. nom  
 Heath av, 2884 (12:3256), es, 20.2x100.6; ext of \$1,500 mtg to Sept'29'18 at % as per bond Jan'13; Jan'14'14; Cath Shea with Mary A Baum, 551 W 170. nom  
 Hoe av (11:2989), nec 172d, 25x75; Jan'8; Jan'9'14; 3y5%; Jno Kroog, 941 E 172 to Wm Ollendorff, 501 W 110. 12,000  
 Hoe av (11:2989), same prop; sobrn agmt; Jan'8; Jan'9'14; Victor Kapfer with same. nom  
 Hunts Point av (10:2770), nec Randall av, 84x110.6x75x78.6; ext of \$4,000 mtg to Jan'6'17 at 6%; Jan'6; Jan'15'14; Thos Burke with Philomena Dunn. nom  
 Mapes av, 1961 (11:3106), ext of \$57,500 mtg to Dec'16'16 at 5%; Dec'15'13; Jan'9'14; Wm R Ware & ano trstes Enoch R Ware with Jno W Cornish Constn Co. nom  
 Mohegan av, 1817 (11:2985), ws, abt 70 n 175th, 50x98.10 to Vineyard pl x50x98.11; pr mtr \$39,000; Jan'10; Jan'12'14; installs, 6%; McEvoy & Koester Constn Co, 906 E 176, to Jos G Blonstein, Bayonne, NJ. 2,000

Mohegan av, 1817; consent to above mtg; Jan'10; Jan'12'14; same to same.  
 Mohegan av, 1817; certf as to above mtg; Jan'10; Jan'12'14; same to same. —  
 Monterey av (11:3061), ws, 152.4 s 179th, 50.9x97x50.9x97.10; pr mtg \$—; Jan'9'14; due &c as per bond; Fanny Simonoff to Benj Kaplan, 1468 Seabury pl. 6,000  
 Morris av (9:2449-2450) swc 167th, 100 x100; PM; Jan'10; Jan'13'14; 5y5%; Ethel M Sanders to Frederic A de Peyster, 13 E 86, et al. 10,000  
 Morris Park av (\*), swc Fowler av, 50x100; Dec'29'13; Jan'12'14; due July'16, 5%; Michele Volini to Morris Park Estates, 25 Broad. 4,340  
 Morris Park av (\*), ns, abt 265 w Unionport rd, 25x129.1x25.6x147.10, except pt for Morris Park av; Jan'14'14; due &c as per bond; Eliz Beekmeyer to Otto Sattler, 2042 Ryer av. 5,000  
 North Chestnut dr (\*), ss, 460 e No Chestnut dr, 40x100x41x100; pr mtg \$3,500; Dec'29'13; Jan'12'14; due &c as per bond; Vita M D'Amore to Alessandro Mauro, 3835 Bronxwood av. 750  
 Ogden av (9:2526), ws, 200 s Union pl if extended e, 75x152.7; Jan'15'14; 5y5%; Peter J Lynch, 224 W 140, to German Savgs Bank, 157 4 av. 7,000  
 Overing av (\*), ws, 221.2 s Frisby av, 50 x101.1x50x101.6, except pt for st; Jan'5; Jan'15'14; 5y5½%; Michl J Cavanagh to Chas Battall, Eastchester rd, es, abt 800 n Fordham & Pelham Pkway. 2,000  
 Park av (11:3036), es, 484 n Quarry rd, 25x150, except pt for Park av; Jan'7; Jan'12'14; due &c as per bond; Cath A, Thos A, Edw J, Vincent D & Helen M O'Brien & Mary J Kennard, to Title Guar & Trust Co, 176 Bway. 3,500  
 Parker av (\*), ns, 187.3 e Castle Hill av, 25x100; Jan'9'14; installs, 6%; Maria Vinciguerra to Fannie Catz, 258 E 138. 250  
 Pelham av (\*), ns, adj land Thos Beswick, runs ne508xse300xse446 to av nwx 862.5 to beg, contains 3 993-1000 acres, except pt for Pelham Pkway; Jan'8; Jan'9'14; 3y5½%; Fredk Jr, Emma, William, Wilhelmina & Jno Reulin to Jennie Y Halllock, 2070 Honeywell av. 8,000  
 Powell av (\*), ss, 305 e Pugsley av, 50x108, Unionport; Jan'2; Jan'9'14; due &c as per bond; Mary O'Donnell to Jane Breen, 6 Convent av. 1,500  
 Prospect av (10:2680), swc Home, 156.6 x54.7x120.2x91.8; Dec'29'13; Jan'14'14; 4y 5%; Jos Maticka to Cenek Maticka, 300 E 73. 6,400  
 Prospect av (\*), ns, 379 e Throggs Neck rd, 50x120.4x47.8x116.11; Jan'8; Jan'9'14; due &c as per bond; Philip Wimmer, 2839 Coddington av, to Michl Griess, 1402 Fulton av. 2,100  
 Randall av, nec Hunts Point av, see Hunts Point av, nec Randall av.  
 Ryer av, 2066 (11:3144 & 3149), es, 532.1 n Burnside av, 24.7x100.7x24.7x100.4; Jan'14; Jan'15'14; 3y5%; Edw J Dempsey to Marie A Hoyer, 1745 Park av. 5,000  
 Southern blvd (10:2722), ws, 225 s Barretto, 50x105; Jan'9'14; 5y5½%; Baronet Realty Co, Inc, a corp, to Lawyers T I & T Co, 160 Bway. 38,000  
 Southern blvd (10:2722), same prop; certf as to above mtg; Jan'9'14; same to same.  
 Southern blvd (10:2722), same prop; pr mtg \$38,000; Jan'9'14; due Nov'20'16; 6%; same to Henry Morgenthau Co, 30 E 42. 15,400  
 Southern blvd (10:2722), same prop; certf as to above mtg; Jan'9'14; same to same.  
 Southern blvd (10:2722), ws, 77 s Barretto, 2 lots ea 74x105; 2 mtgs ea \$57,000; Jan'9'14; 5y5½%; Baronet Realty Co Inc, a corp, to Lawyers T I & T Co, 160 Bway. 114,000  
 Southern blvd (10:2722), same prop; 2 mtgs ea \$23,000; 2 pr mtgs \$57,000 ea; Jan'9'14; due Nov'20'16; 6%; same to Henry Morgenthau Co, 30 E 42. 46,000  
 Southern blvd (10:2722), same prop; 2 certfs as to above mtgs; Jan'9'14; same to same.  
 Southern blvd (10:2722), ws, 77 s Barretto, 148x105; certf as to 2 mtgs for \$57,000 ea; Jan'9'14; Baronet Realty Co Inc, a corp, to Lawyers T I & T Co, 160 Bway. —  
 Southern blvd (11:2980), es, 550 s Charlotte, 25x100; pr mtg \$2,500; Jan'13; Jan'15'14; due, &c, as per bond; Danl Ostrow to Herman Locker, 79 Andrew st, Bayonne, NJ. 1,000  
 Southern blvd (11:2980), same prop; bldg loan; Jan'13; Jan'15'14; due, &c, as per bond; same to same. 1,000  
 Taylor av, 1621 (\*), ws, 350 s Van Nest av, except pt for Taylor av; Jan'5; Jan'14'14; due &c as per bond; Carlo Montagna to Frank Paganuzzi, 47 Franklin. 500  
 Teller av, 1105 (9:2429-2434), ext of \$21,000 mtg to Jan'15'19 at 5%; Jan'15'14; Peter Cook & Emma Schall, 62 St Marks pl, with O J Schwarzler Co, 1100 Brook av. nom  
 Tremont av, 742 (11:2951), ss, 150.9 w Prospect av, 25x200; Jan'15'14; due &c as per bond; Arville Realty & Amusement Co to Title Guar & Trust Co, 176 Bway. 12,000  
 Tremont av, 742; certf as to above mtg; Jan'14; Jan'15'14; same to same.  
 University av (11:3210), sec Fordham pl, 25.4x92x25x87.9, except pt for av; Nov'29'13; Jan'15'14; 3y5%; Chas H O'Neill to Louis H Holloway, White Plains, NY. 5,000

**University av** (11:3215), nec 192d, 107.3x 230.6 to ws Old Aqueduct x84.8x228.9 to beg; PM; Jan1; Jan15'14; 3y5%; Jennie Halpert to Geo F Johnson, Hanover Township, Morris Co, NJ. 17,000

**Valentine av** (12:3300), es, 386.10 n 194th, 2 lots together in size 80.1x101.8x 80x99.5; ext of 2 mtgs for \$21,000 ea to Jan 8'19 at 5%; Jan8; Jan14'14; Lawyers Mtg Co with Jno J Tully Co, 730 North Oak dr. nom

**Valentine av, 2931** (12:3320), ns, 75 e 199th, 50x100; Jan10; Jan12'14; 2y4½%; C Eliz Wetzel, widow, to Lottie V. wife Fredk Muller, Douglaston, Queens Co, NY. 1,000

**Valentine av (\*)**, ws, 150 n Baisley av, 75x80; PM; Jan12; Jan14'14; due Oct15'17, 6%; Jos Klug to Carl Klug, 1153 Intervale av. 1,000

**Vyse av** (11:2993), sec Freeman, 130.7x 50x108.4x54.8; pr mtg \$18,000; Jan8; Jan

15'14; due, &c, as per bond; Martha Perna, 991 E 167, to Fredk Muller, 850 Fairmount pl. 1,000

**Washington av, 1937-9** (11:3034), ws, 160 s 178th, 56x150, except pt for av; Jan 12; Jan13'14; due &c as per bond; Clara, Emma & Adele Waterman to Title Guar & Trust Co. 3,000

**Webster av** (9:2427), ws, 184 n 168th, 26x100; pr mtg \$—; Jan6; Jan10'14; 2y 6%; Foulard Realty Co to Lincoln Mtg Co, 100 Bway. 1,000

**Webster av** (9:2427); same prop; certf as to above mtg; Jan6; Jan10'14; same to same.

**White Plains av (\*)**, nec 233d, 114.6x 100; certf as to mtg for \$6,000; Jan17; Jan 15'14; Arborview Realty Co, a corpn, to Max Marx.

**White Plains av (\*)**, nec 233d; 114.6x100; pr mtg \$19,000; Jan14; Jan15'14; 1y6%;

Arborview Realty Co to Max Marx, 419 Convent av. 6,000

**White Plains av (\*)**, sec Gun Hill rd, runs sw479.6xsw179.3xse40.1xse231.7 to cl Cruger av xn589.1 to rd xw181.8 to beg; ext of \$30,000 mtg to Jan3'17 at 6%; Jan7; Jan13'14; Marian C Varian with American Real Estate Co, 527 5 av. nom

**1ST av (\*)**, es, 350 s 216th, 100x100; Jan 12; Jan15'14; due &c as per bond; Harris L Varian, 206 S 9 av, Mt Vernon, NY, to Jno E Eustis, 1985 Sedgwick av, & ano, trstes Josephine Turner. 3,000

**3D av, 3712-4** (11:2926), es, 156.7 n 170th, 2 lots, ea 26x100; 2 mtgs, ea \$2,000; 2 pr mtgs, ea \$—; Jan10; Jan12'14; 2y6%; Thos D Malcolm Constn Co, 3651 3 av, to Jennie Rudinsky, 1241 47th, Bklyn. 4,000

**3D av, 3712-4**; certf as to above 2 mtgs for \$2,000 each; Jan10; Jan12'14; Thos D Malcolm Constn Co to Jennie Rudinsky.

The text of these pages is copyrighted. All rights are reserved. Notice is hereby given that infringement will lead to prosecution.

# IMPORTANT TO THOSE WHO EXPECT TO BUILD

WHEN PLANNING TO BUILD, you will find it of **great value** to first make a careful **personal** study of the illustrations of houses, etc., that have been designed and built by a **number** of leading architects, and to also learn **their** ideas regarding the best interior arrangement and the most appropriate furnishings. This important information, which would greatly aid you in deciding about **your own** building plans, when you take them up with your own architect and builder, can easily be obtained from the **several hundred** exterior and interior designs that are beautifully illustrated in the last six numbers of the



## Architectural Record

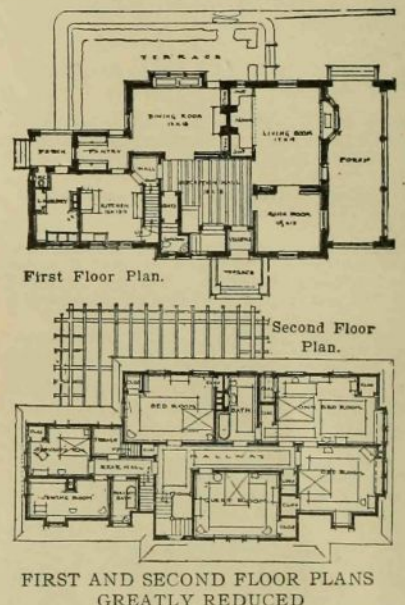
The National Magazine for Architects, Owners and Builders

A Powerful Business Producer for those firms whose products are used in Building Construction, Equipment or Furnishing  
GUARANTEED CIRCULATION EXCEEDS 11,000 MONTHLY.

In these six numbers are **also** illustrated and described the numerous building-specialties that add very much to the comfort, convenience and value of the modern home, without materially increasing the initial cost; and **this** information **may** mean the **saving** of many dollars to **you**.

### Our Special Offer

We have a limited supply of these sets of six (including the October COUNTRY HOUSE NUMBER), which are invaluable to those who expect to build or make alterations. Although the **regular** price is \$1.50, we make **you** a **special** offer of \$1.00 for the six, while the sets last, if you will mention *Record and Guide*. They will soon be sold. Send us your order today, tomorrow may be too late.



**THIS \$1.00 SHOULD SAVE YOU HUNDREDS**

THE ARCHITECTURAL RECORD

119 WEST FORTIETH STREET.

Enclosed is \$1.00, for which please mail your last six numbers (including the October COUNTRY HOUSE NUMBER), according to special offer in *Record and Guide*.

Name \_\_\_\_\_

Address \_\_\_\_\_